

CENTURA

sphera[®] element

SUSTAINABLE
MODERN
ADVANCED
ROBUST
TECHNOLOGY

DURABLE
MODERNE
PERFECTIONNÉ
ROBUSTE
TECHNOLOGIQUE

HOMOGENEOUS COMMERCIAL VINYL / SHEET FLOOR COVERING
REVÊTEMENT DE SOL COMMERCIAL / VINYLE HOMOGÈNE EN ROULEAU



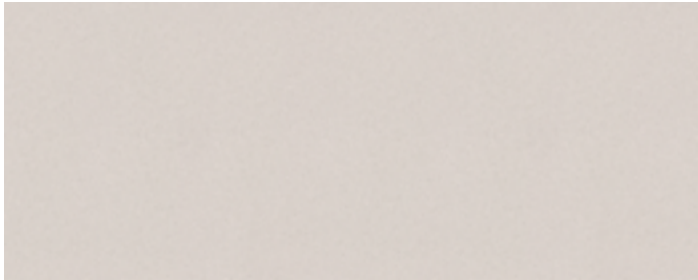
SMART

by/par **forbo**

sphera® element

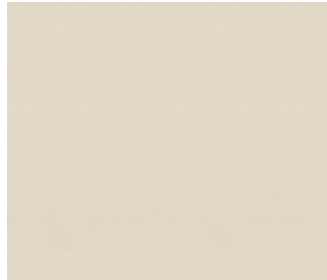
by/par forbo

ELEMENT



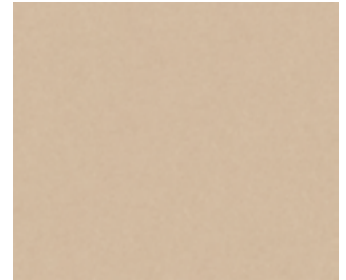
LRV 62%

ivory 50017



LRV 70%

shell 50022



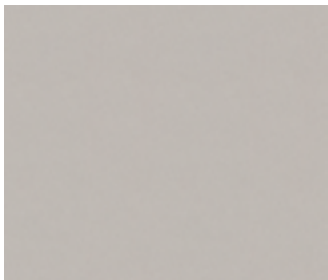
LRV 53%

sand 50023



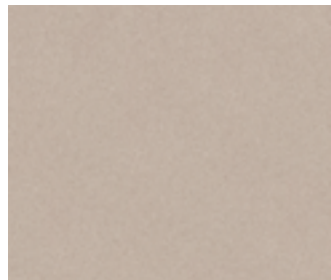
LRV 49%

contrast mortar 51018



LRV 47%

greige 50028

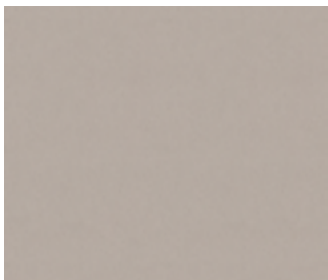


LRV 49%

mortar 50018

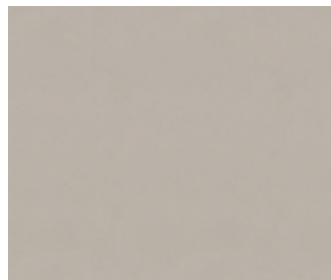


contrast mortar 51018 / ivory 50017 / earth 50025



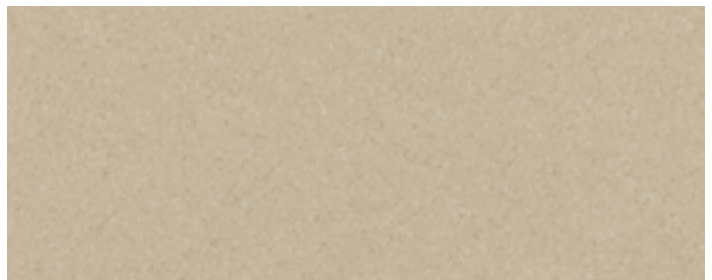
LRV 34%

taupe 50029



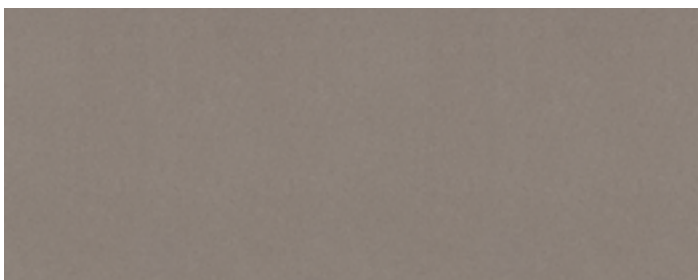
LRV 36%

clay 50019



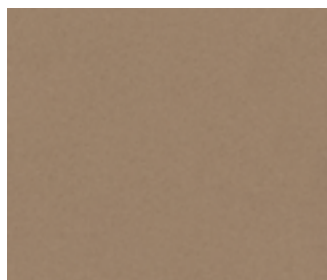
LRV 51%

contrast sand 51023



LRV 23%

silt 50020



LRV 23%

earth 50025



LRV 38%

stone 50024

sphera® element

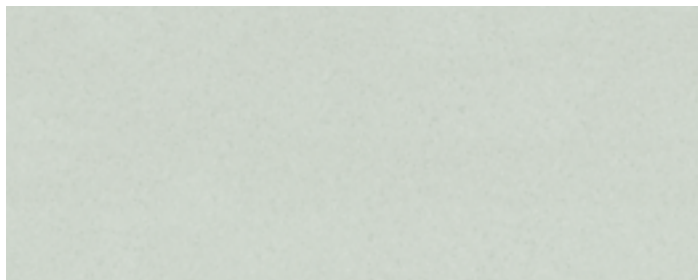
by/par **forbo**

ELEMENT



LRV65%

white moss 50063



LRV66%

pastel kelp 50076



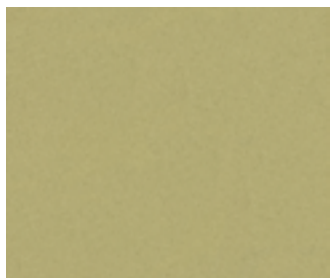
LRV 50%

light moss 50064



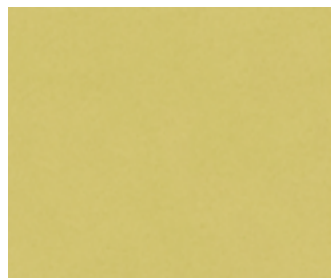
LRV 71%

straw 50067



LRV 38%

moss 50065

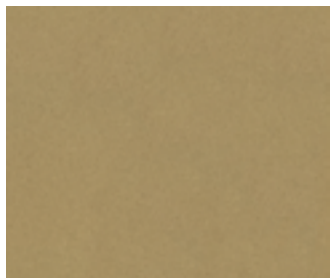


LRV 47%

hay 50068



storm grey 50062 / contrast amber 51054 / dark kelp 50078 / reef green 50080



LRV 27%

flax 50066



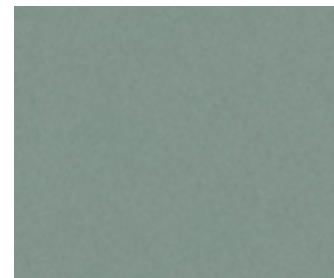
LRV 21%

dark moss 50069



LRV 16%

dark kelp 50078



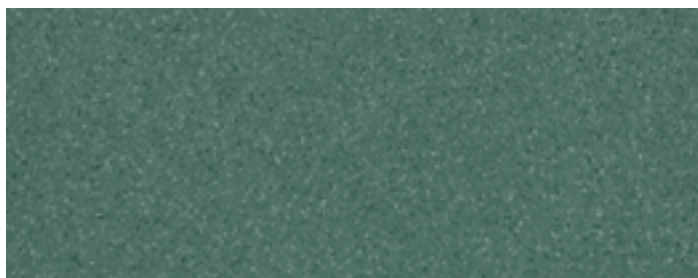
LRV 28%

kelp 50077



LRV 54%

contrast amber 51054



LRV 17%

contrast kelp 51078

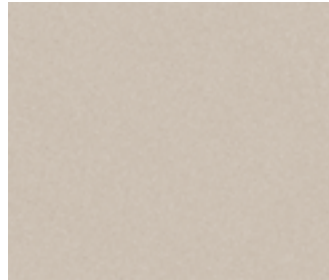
sphera® element

by/par **forbo**

ELEMENT



LRV 63% grey sky 50007



LRV 62% light peach 50072



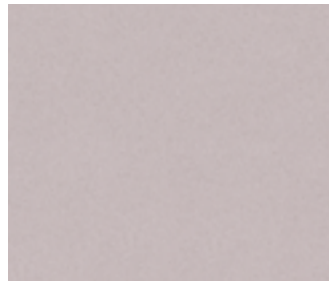
LRV 45% contrast peach 51073



LRV 41% peach 50073



LRV 51% lagoon 50079



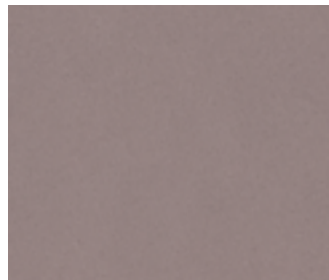
LRV 47% soft violet 50070



light peach 50072 / peach 50073 / dark peach 50074



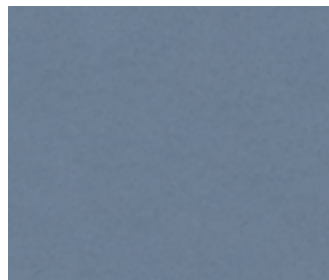
LRV 24% reef green 50080



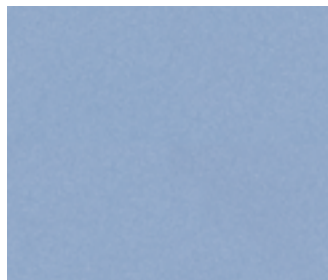
LRV 27% violet 50071



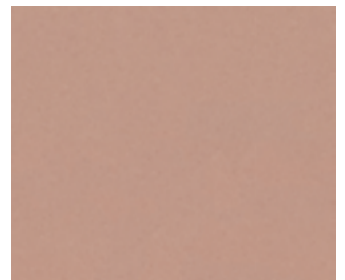
LRV 13% ocean 50081



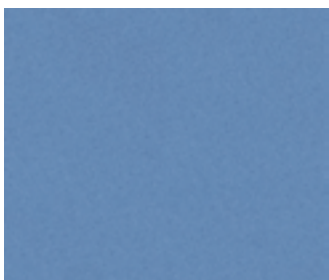
LRV 23% lavender grey 50082



LRV 36% China blue 50037



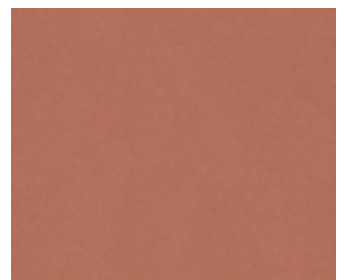
LRV 32% dark peach 50074



LRV 19% blueberry 50038



LRV 38% contrast China blue 51037



LRV 18% hibiscus 50075

sphera® element

by/par **forbo**

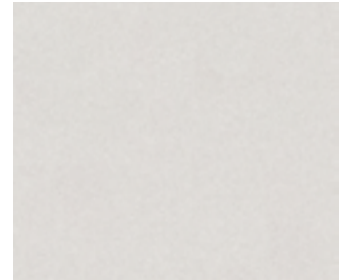
ELEMENT



LRV 59% **storm grey 50062**



LRV 51% **contrast mid grey 51004**



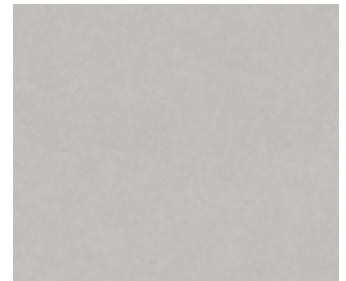
LRV 72% **white 50000**



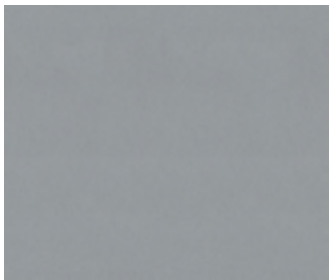
LRV 47% **silver grey 50008**



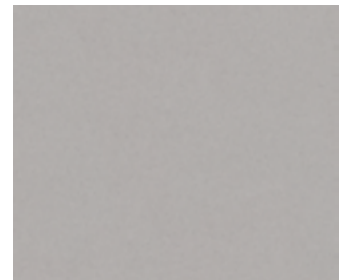
silver grey 50008 / contrast dark grey 51005 / hay 50068



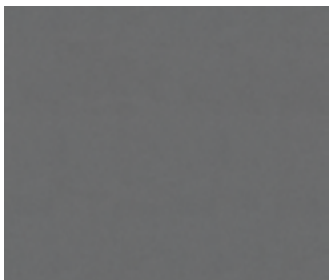
LRV 53% **light neutral grey 50003**



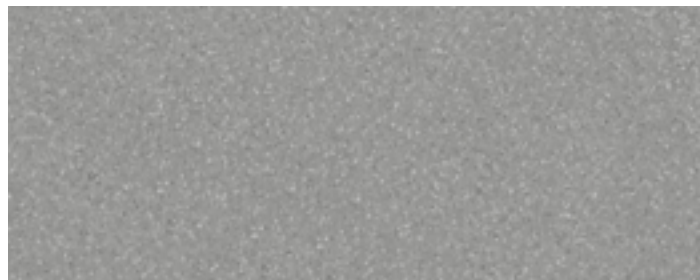
LRV 27% **lead 50009**



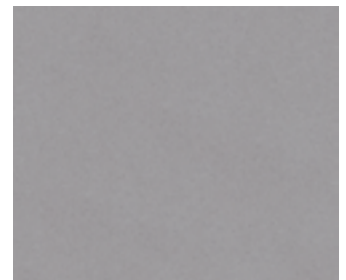
LRV 36% **mid neutral grey 50004**



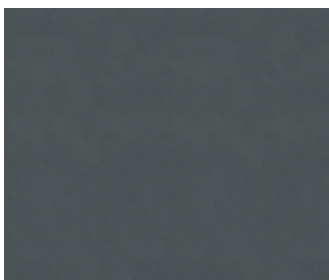
LRV 17% **iron 50010**



LRV 32% **contrast dark grey 51005**



LRV 24% **dark neutral grey 50005**



LRV 10% **steel 50011**



LRV 8% **contrast black 51001**



LRV 15% **anthracite 50006**

DESCRIPTION	
Construction	Homogeneous Commercial Vinyl Sheet Floor Covering / Calendered and compacted under high pressure / "Phtalate Free" Revêtement de sol homogène commercial en rouleau de vinyle / Calandré et compacté sous haute pression / "Sans Phtalate"
Type / Style	Non directionnal. Tone on tone chips / Non directionnel. Copeaux ton sur ton
Standard / Norme	Commercial Use : Exceeds ASTM F1913 / Usage commercial : surpasse ASTM F1913
Total Thickness / Épaisseur	0.080" / 2,0mm
Wear Layer / Couche d'usure	0.080" / 2,0mm
Width / Largeur	6'6" / 2m
Length / Longueur	88'6" / 27m
Roll Coverage / Surface par rouleau	64.6sq. yd. / 54m ²
Weight / Poids	2,9 kg / m ²
Surface Finish / Protection	No Wax, No Spray Buff, for the life of the product / Pas de cirage, pas de vaporisation, pour la vie du produit



PERFORMANCE	
Chemical and Stain Resistance Résistance chimique et aux taches	Tested in accordance with ASTM F925, Standard Test Method for Resistance to Chemicals of Resilient Flooring Testé conformément à ASTM F925, méthode de test standard pour la résistance aux produits chimiques d'un revêtement résilient
Abrasion Resistance / Résistance à l'abrasion	EN 660-2: Group T / EN 660-2: Groupe T
Slip Resistance / Résistance au glissement	Meets or exceeds the industry recommendations of >0.5 for flat surfaces when tested in accordance with ASTM D2047 Respecte ou surpasse les recommandations de l'industrie de >0,5 pour les surfaces planes, lorsque testé selon ASTM D2047
Static Load Resistance Résistance au poinçonnement	Exceeds ASTM F970: 750 PSI / Surpasse ASTM F970: 750 PSI
Wheel Castor Resistance Résistance aux chaises à roulettes	Pass EN 425: suitable for office chairs with castors / Conforme EN 425: convient pour chaises de bureau avec roulettes
Dimensional Stability / Stabilité dimensionnelle	ISO 23999: <0.2 %
Thermal Conductivity / Conductivité thermique	EN12524: 0.25 W / Max 27°C (85°F) / Suitable for heated floors / Convient aux planchers chauffants
Impact Insulation Class / Bruit de choc	ASTM E989 : IIC 40 / EN ISO 717-2: L=4 dB
Sound Transmission Class / Sonorité à la marche	ASTM E989 : STC 53 / NF S 31-074: L <75 dB class B / ASTM E989 : STC 53 / NF S 31-074: L <75 dB classe B
Flame Spread and Smoke Development Propagation des flammes et dégagement de fumée	FSR-60: SDC-180 when tested in accordance to CAN/ULC S102.2 / ASTM E648 / ASTM E662 FSR-60: DDC-180 lorsqu'il est testé conformément à CAN/ULC S102.2 / ASTM E648 / ASTM E662



ENVIRONMENTAL / ENVIRONNEMENT	
Micro-Organism Resistance Résistance aux micro-organismes	EN-ISO 846 / Bacteriostat, no growth EN-ISO 846 / Bactériostatique, pas de croissance
Indoor Air Quality, VOC Emission: v4, Credit 2 Qualité de l'air intérieur, émissions VOC: v4, Crédit 2	Compliant with CHPS 01350 Requirements Répond aux exigences CHPS 01350
Low Emitting Material: Credit 4, option 1 Matériel à émissions réduites: Crédit 4, option 1	Adhesive comply with SCAQMD Rule # 1168 Adhésif en conformité pour émissions COV
Recycled content 0% backing: Credit 4, option 2 Contenu recyclé endos 0%: Crédit 4, option 2	100% Recyclable
Plants Certifications / Certificats d'usines	ISO 9001, ISO14001, OHSAS 18001
Health and Safety / Hygiène et sécurité	Complies with REACH regulation Conforme au règlement REACH
Warranty: Limited 10 years Garantie: Limitée de 10 ans	Special conditions & terms, on request Conditions et termes spéciaux, sur demande



Exclusively distributed by Centura / Distribué exclusivement par Centura : www.centura.ca

VANCOUVER
T (604) 298-8453

CALGARY
T (403) 259-0106

EDMONTON
T (780) 454-8591

PETERBOROUGH
T (705) 743-2881

TORONTO
T (416) 785-5165

QUÉBEC
T (418) 653-5267

MONTRÉAL
T (514) 336-4311

LONDON
T (519) 681-1961

WINDSOR
T (519) 966-3580

HAMILTON
T (905) 383-5120

OTTAWA
T (613) 820-6622

MONCTON
T (506) 853-0123

HALIFAX
T (902) 468-7679

ST. JOHN'S
T (709) 579-4600