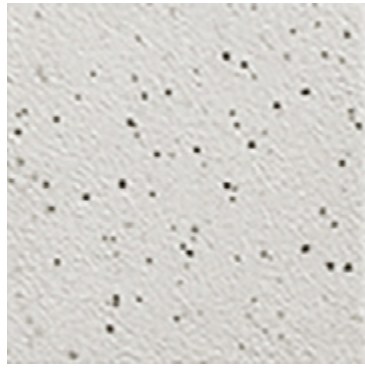


# PLAIN / TECHNO

LOOK  
PLAIN

**CENTURA**  
WALL AND FLOOR COVERINGS

centura.ca



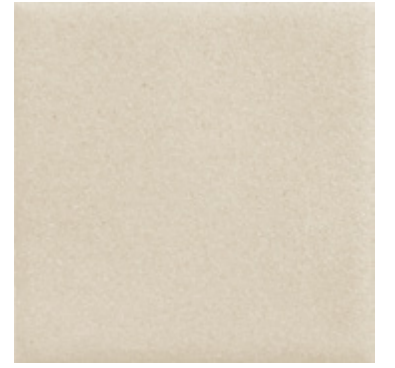
white granite - matte



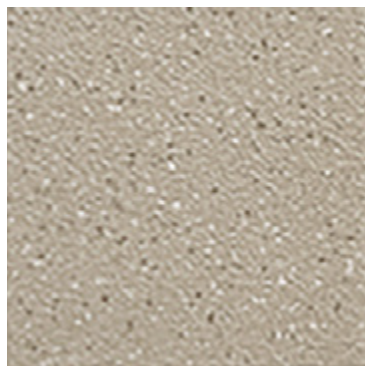
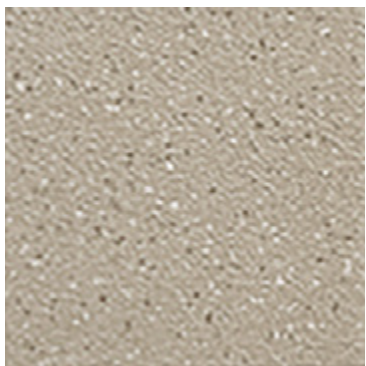
special white - matte



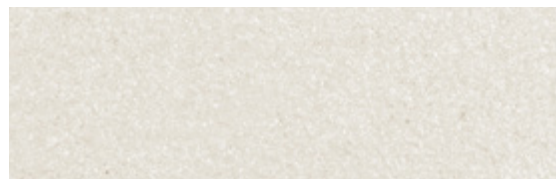
special white - matte



ivory - matte



ocher granite - matte



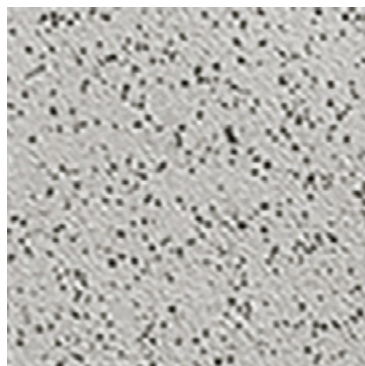
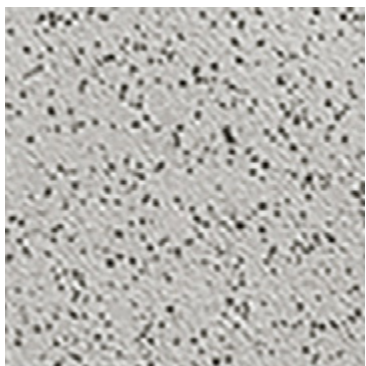
white - matte



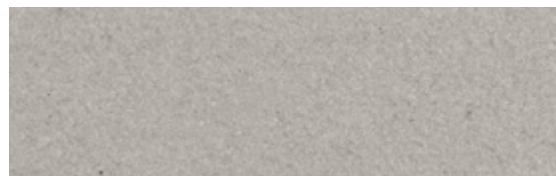
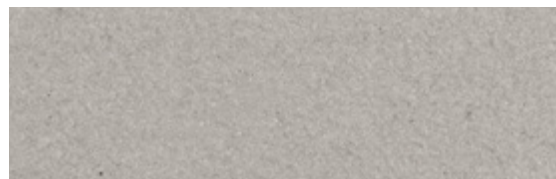
white - matte



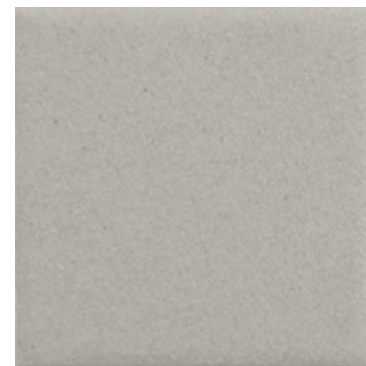
cream - matte



grey granite - matte



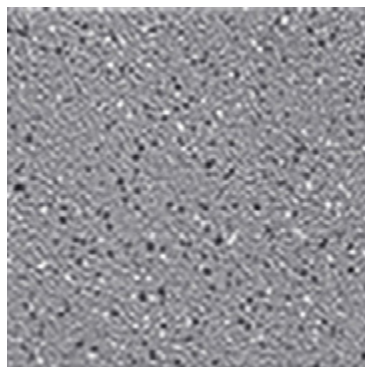
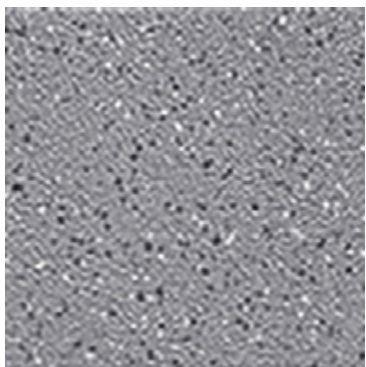
light grey - matte



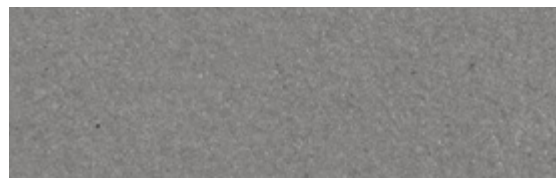
light grey - matte



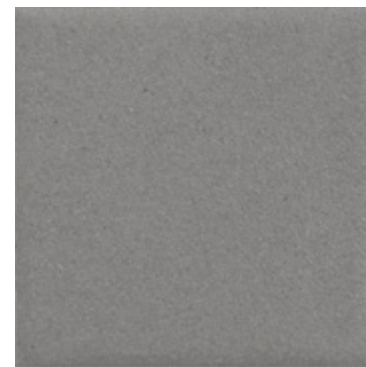
black - matte



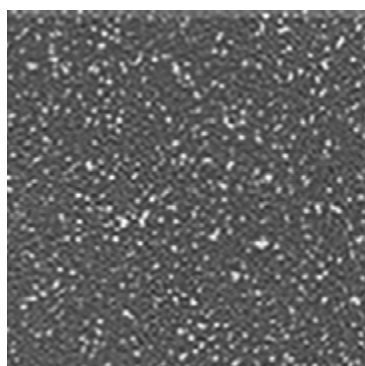
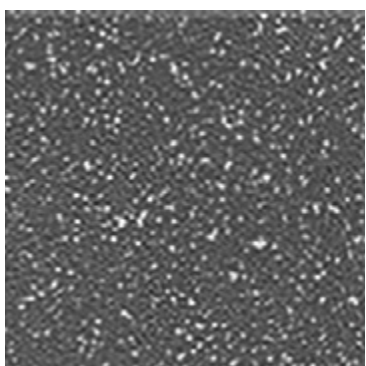
blue grey granite - matte



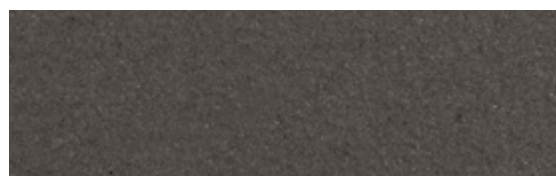
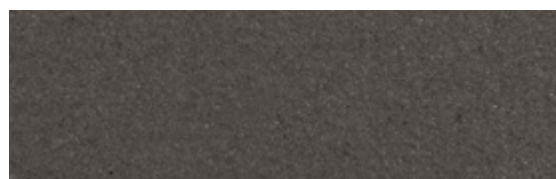
slate grey - matte



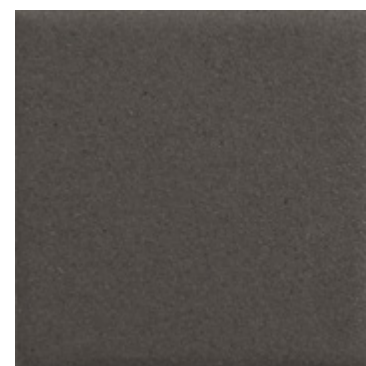
slate grey - matte



charcoal granite - matte



charcoal - matte



charcoal - matte



\*The shade may vary according to production runs. Check batches before installation.

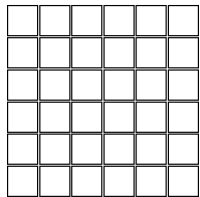
centura.ca



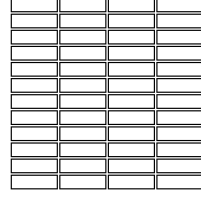
**Porcelain mosaic  
Dot mounted**

Look and feel : plain  
Installation : floor, wall  
Usage : residential, commercial  
Made in China

**Stock size**



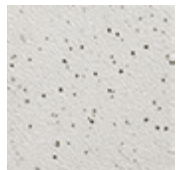
**12" x 12"**  
30 cm x 30 cm  
thickness 6 mm  
matte finish



**12" x 12"**  
30 cm x 30 cm  
thickness 6 mm  
matte finish

**Main technical specifications**

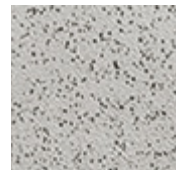
Test	Standard	Results
Frost resistance	ISO 10545-12	Resistant
Slip resistance	DIN 51130 DCOF	R10 ≥0,42
Shades variation	—	V1 Uniform



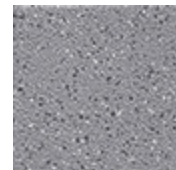
white granite  
2"X2"



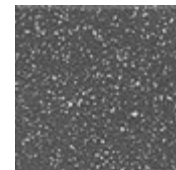
ocher granite  
2"X2"



grey granite  
2"X2"



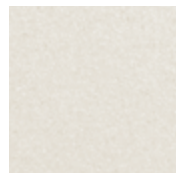
blue grey granite  
2"X2"



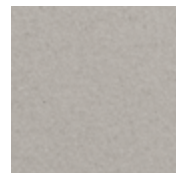
charcoal granite  
2"X2"



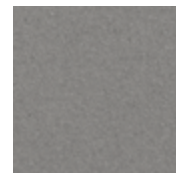
special white  
2"X2" / 1"X3"



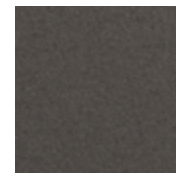
white  
2"X2" / 1"X3"



light grey  
2"X2" / 1"X3"



slate grey  
2"X2" / 1"X3"



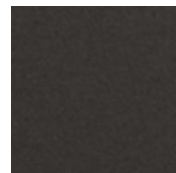
charcoal  
2"X2" / 1"X3"



ivory  
2"X2"



cream  
2"X2"



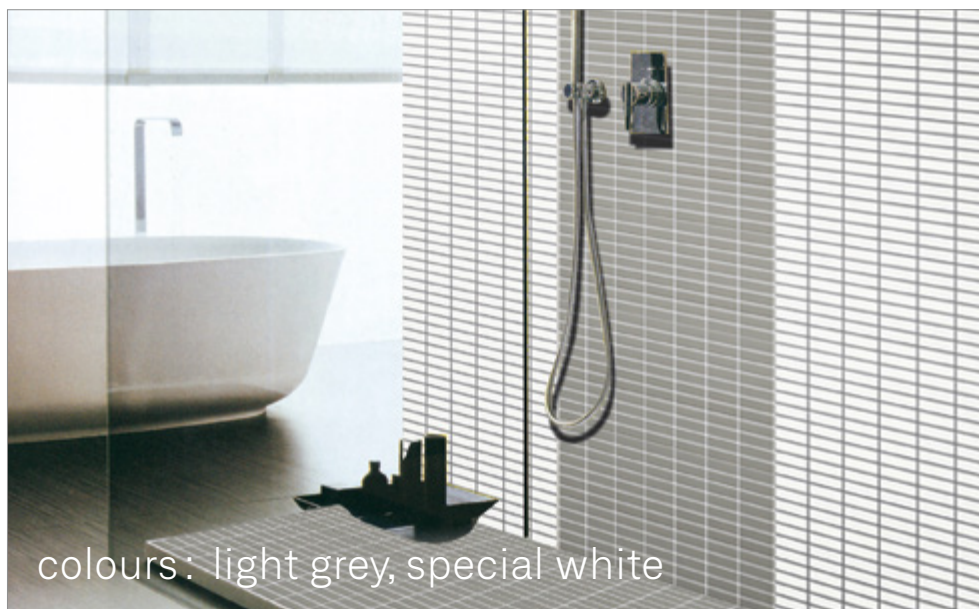
black  
2"X2"



colours : slate grey,  
light grey, white



colour charcoal granite



colours : light grey, special white



Ask your Centura representative about our installation warranties.