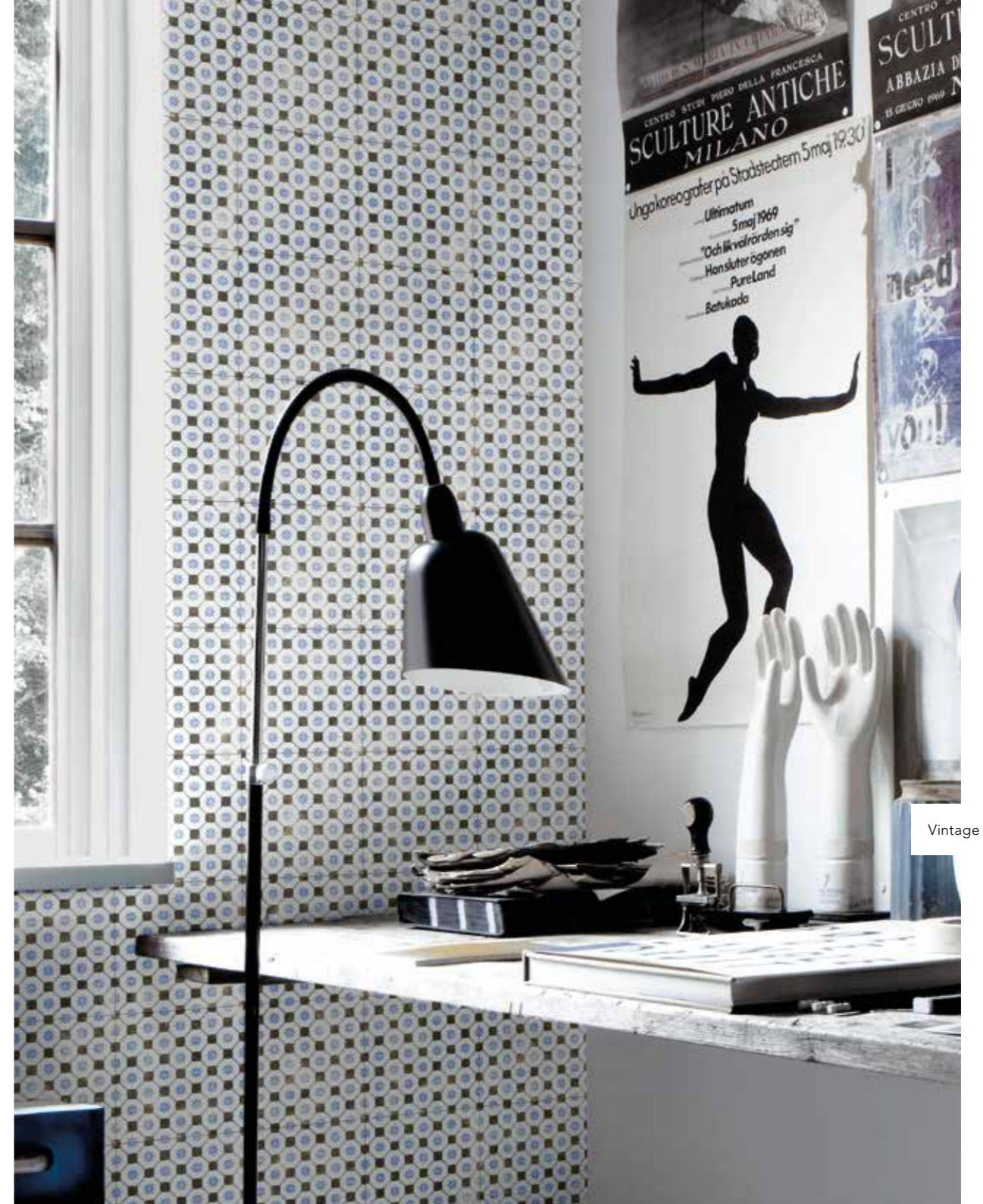


KOKOROS
KOKOROS
KOKOROS

MARINER
CENTURA
VINTAGE

V₂

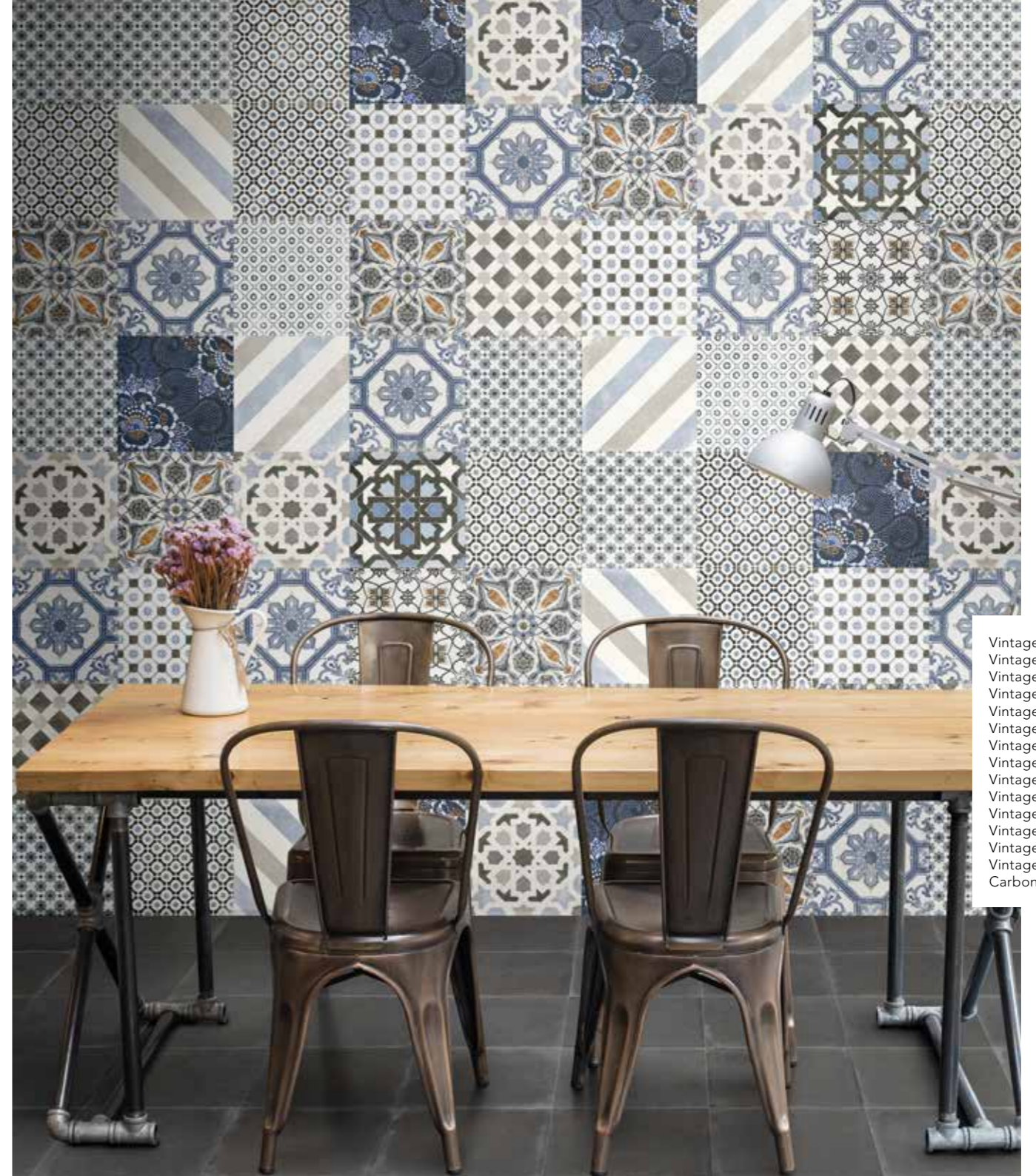
Vintage 12



Vintage 10



Vintage 5
Cloudy White/Bianco
Ocean Blue / Avio



Vintage 1
Vintage 2
Vintage 3
Vintage 4
Vintage 5
Vintage 6
Vintage 7
Vintage 8
Vintage 9
Vintage 10
Vintage 11
Vintage 12
Vintage 13
Vintage 14
Carbon Black/Nero



Vintage 1
Carbon Black/Nero

V8

Vintage 7
Cloudy White/Bianco

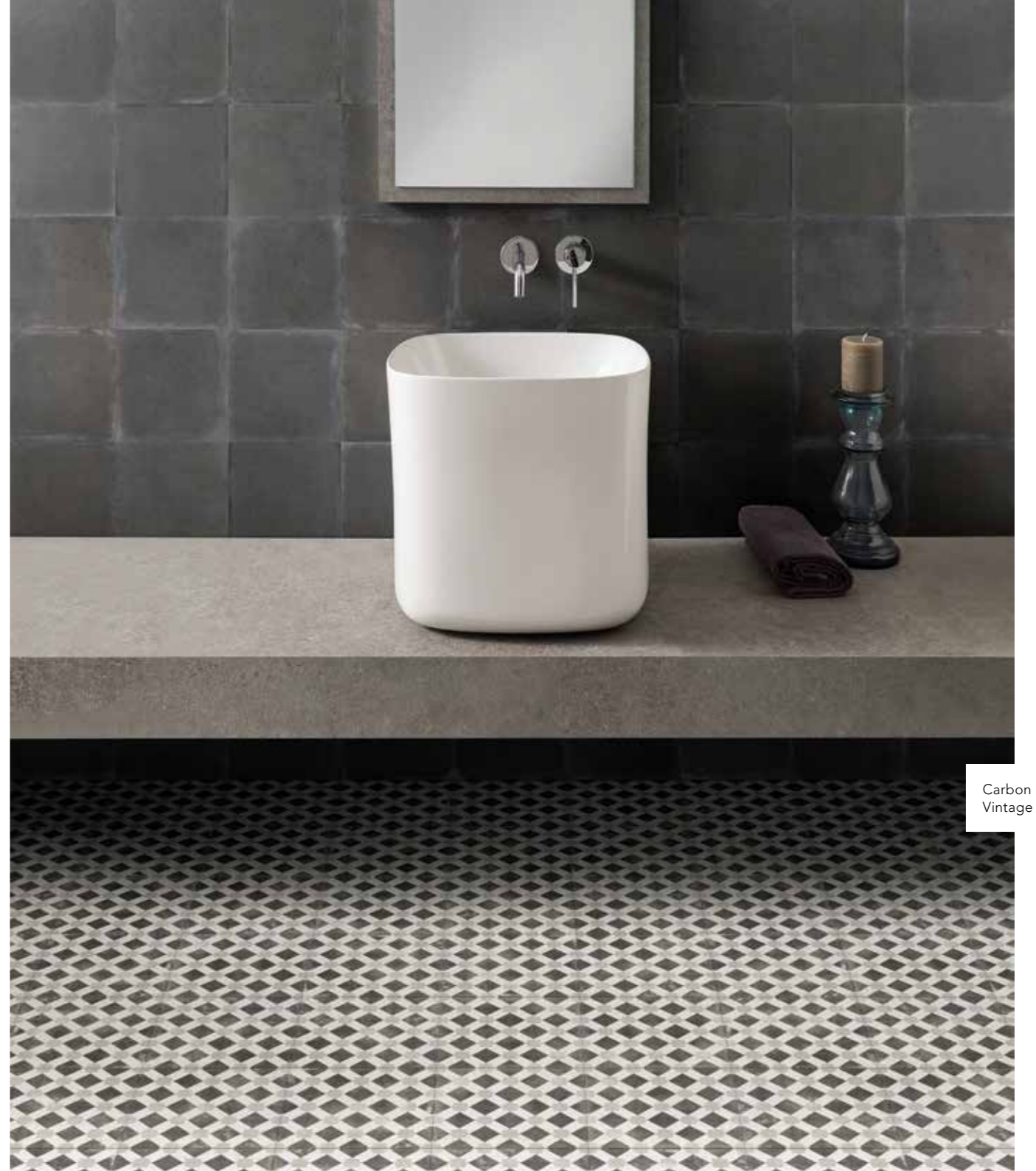


Vintage 9
Cloudy White/Bianco

Vintage 3
Vintage 4
Vintage 6
Vintage 10
Vintage 12
Vintage 14
Cloudy White/Bianco



Vintage 4
Cloudy White/Bianco
Ocean Blue / Avio



Carbon Black/Nero
Vintage 11

V₁₄

Vintage 14



Vintage 13
Carbon Black/Nero

V16

Vintage 16
Cloudy White/Bianco
Seafoam Green/Verde



Vintage 18
Carbon Black/Nero

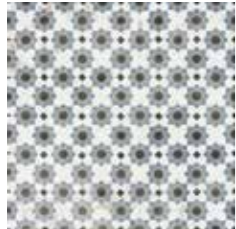
Vintage 15
Cloudy White/Bianco
Carbon Black/Nero



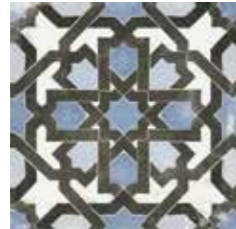
V₂₀

20X20 8"X8" GRES PORCELLANATO SMALTATO GLAZED PORCELAIN TILE
 SPESSORE 9,5 mm THICKNESS 0.38" INK JET DIGITAL TECHNOLOGY

VINTAGE



20x20 8"x8" **148**
VIN1 Vintage 1



20x20 8"x8" **148**
VIN2 Vintage 2



20x20 8"x8" **148**
VIN3 Vintage 3



20x20 8"x8" **148**
VIN4 Vintage 4



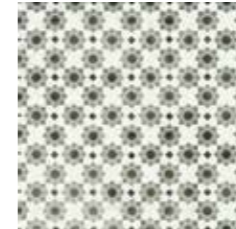
20x20 8"x8" **148**
VIN5 Vintage 5



20x20 8"x8" **148**
VIN15 Vintage 15



20x20 8"x8" **148**
VIN16 Vintage 16



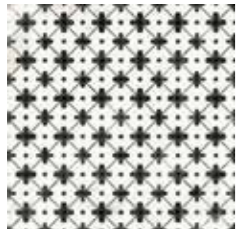
20x20 8"x8" **148**
VIN17 Vintage 17



20x20 8"x8" **148**
VIN18 Vintage 18



20x20 8"x8" **148**
VIN19 Vintage 19



20x20 8"x8" **148**
VIN6 Vintage 6



20x20 8"x8" **148**
VIN7 Vintage 7



20x20 8"x8" **148**
VIN8 Vintage 8



20x20 8"x8" **148**
VIN9 Vintage 9



20x20 8"x8" **148**
VIN10 Vintage 10

fondi field tile



20x20 8"x8" **148**
VIN11 Vintage 11



20x20 8"x8" **148**
VIN12 Vintage 12



20x20 8"x8" **148**
VIN13 Vintage 13



20x20 8"x8" **148**
VIN14 Vintage 14



20x20 8"x8" **145**
VINBI Cloudy White / Bianco



20x20 8"x8" **145**
VINGR Grey Mist / Grigio



20x20 8"x8" **145**
VINNE Carbon Black / Nero



20x20 8"x8" **145**
VINAV Ocean Blue / Avio



20x20 8"x8" **145**
VINVE Seafoam Green / Verde









| | pcs/box | mq/box | kg/box | box/pallet | mq/pallet | kg/pallet |
|---------------------|---------|--------|--------|------------|-----------|-----------|
| 20x20 8"x8" Vintage | 26 | 1,04 | 20,90 | 64 | 66,56 | 1337,60 |

| | pcs/box | mq/box | kg/box | box/pallet | mq/pallet | kg/pallet |
|---------------------|---------|--------|--------|------------|-----------|-----------|
| 20x20 8"x8" Vintage | 26 | 1,04 | 20,90 | 64 | 66,56 | 1337,60 |

VINTAGE

20x20 8"x8"

NORMA DI RIFERIMENTO SPECIFICATION REFERENCE EN 14411 appendice G Bla GL

| CARATTERISTICHE TECNICHE TECHNICAL FEATURES | NORMA STANDARD | VALORE PRESCRITTO VALUE REQUIRED | VINTAGE | |
|--|------------------------------|--|--|--------------------|
| DIMENSIONI - SIZE | | | | |
|  ASSORBIMENTO ACQUA IN % % WATER ABSORPTION | EN ISO 10545/3 ASTM C 373 | ≤ 0,5 % | CONFORME COMPLY | |
|  RESISTENZA AGLI AGENTI CHIMICI A BASSA CONCENTRAZIONE CHEMICAL AGENTS RESISTANCE AT LOW CONCENTRATION | EN ISO 10545/13 | VALORE DA DICHIARARE VALUE TO BE DECLARED | GLA | |
| | ASTM C 650 | CLASS A - CLASS E | CLASS A | |
|  RESISTENZA AI PRODOTTI CHIMICI DI USO DOMESTICO E AGLI ADDITIVI PER PISCINA - RESISTANCE TO DOMESTIC CHEMICAL PRODUCTS AND ADDITIVES FOR SWIMMING POOLS | EN ISO 10545/13 | MINIMO GB MINIMUM GB | GA | |
|  RESISTENZA ALLO SCIVOLAMENTO SLIP RESISTANCE (ANTI-SLIP) | DCOF (ANSI A 137.1) | ≥ 0,42 | CONFORME COMPLY | |
|  RESISTENZA ALL'ABRASIONE ABRASION RESISTANCE | EN ISO 10545/7 | VALORE DA DICHIARARE VALUE TO BE DECLARED | da 2 a 5 in base al colore from 2 to 5 according to color | |
|  SFORZO DI ROTTURA (N) BREAKING STRENGTH (N) | EN ISO 10545/4 | SPESSORE ≤ 7,5 mm THICKNESS ≤ 7,5 mm | ≥ 700 N | CONFORME COMPLY |
| | | SPESSORE ≥ 7,5 mm THICKNESS ≥ 7,5 mm | ≥ 1300 N | CONFORME COMPLY |
| | ASTM C 648 | AVERAGE ≥ 250 lbf INDIVIDUAL ≥ 225 lbf | CONFORME COMPLY | |
|  RESISTENZA ALLE MACCHIE STAIN RESISTANCE | EN ISO 10545/14 | ≥ CLASSE 3 | CONFORME COMPLY | |
| | ASTM C 1378 | CLASS A - CLASS E | CLASS A | |
|  GRADO DI VARIAZIONE CROMATICA AESTHETIC CLASSES | ANSI A137.1 | V0 - V4 | V3 | |



Vintage 8