

# Glitch

CENTURA



Glitch is a range of porcelain stoneware tiles developed by Piemme. Glitch brings out and highlights the heterogeneous nature of concrete, and all those little imperfections characteristic of this surface, such as cracks, patinas, scratches and weathering, all harmonized and reinterpreted as ceramic tiles.

Usage: Residential, Commercial, Floor, Wall





Salt



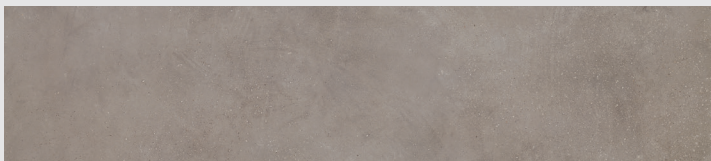
Sand



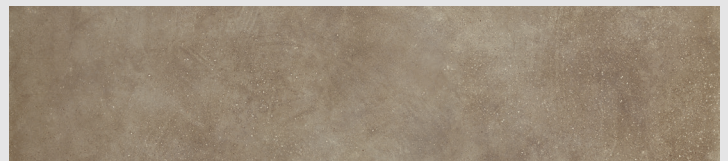
Gravel



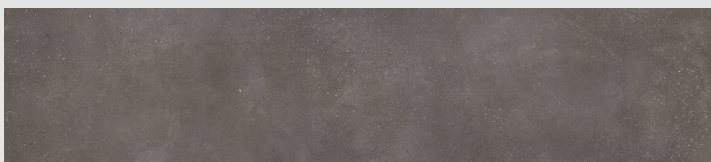
Ash



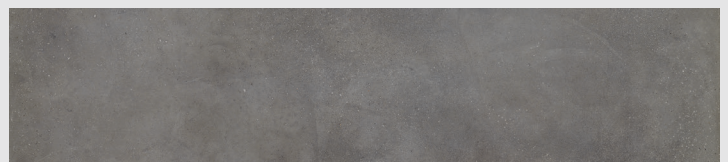
Flint



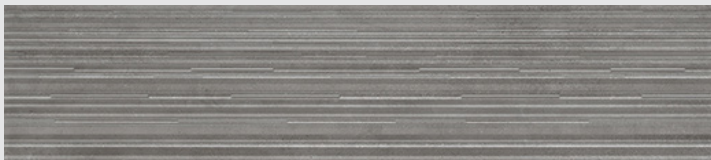
Clay



Carbon



Graphite



Fault

\* Available in Salt, Sand, Ash & Graphite.

Not all products are stocked. Please check availability.

	12"x24"	24"x24"	24"x48"
<b>Salt</b>	03276	03285	03267
<b>Sand</b>	03275	03284	03266
<b>Gravel</b>	03274	03283	03265
<b>Ash</b>	03277	03286	03268
<b>Flint</b>	03278	03287	03269
<b>Clay</b>	03273	03282	03264
<b>Carbon</b>	03281	03289	03272
<b>Graphite</b>	03279	03288	03271

### Special Pieces Available

Gradino Costa Retta  
Battiscopa  
Bacchetta Jolly



Test	Standard	Req'd Value	Test Result
Water Absorption	ISO 10545.3	≤ 0.5%	In accordance
Thermal Shock Resistance	ISO 10545.9	Request	Resistant
Stain Resistance	ISO 10545.14	Test method available	In accordance
Frost Resistance	ISO 10545.12	Request	Resistant
Chemical Resistance	ISO 10545.13	According to builder's specifications	Resistant
Shade Variation			V2
Dynamic Coefficient of Friction	DCOF	≥ 0.6 Wet	≥ 0.62 Wet