

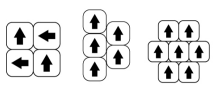


PARK AVENUE

CONSTRUCTION	LOOP
PILE FIBER COMPOSITION	100% Nylon (Polyamide 6)
YARN TYPE	Cable
DYE METHOD	Solution Dyed
PILE WEIGHT	700 g/m ²
NUMBER OF TUFTS	236400/m ²
TUFTING GAUGE	1/10"
PRIMARY BACKING	Non-Woven
SECONDARY BACKING	StableShield-100% Vinyl
OPTIONAL BACKINGS	Recova-PU Cushion , EcoShield-100% Recycled Vinyl
TILE SIZE	50 cm x 50 cm (19.6 in x 19.6 in)
PILE HEIGHT	3.5 mm
TOTAL HEIGHT	6.5 mm
PILE TREATMENT	INVISTA Anti-Soil Treatment, Anti-Microbial (optional)
RECOMMENDED	Quarter Turn, Ashlar or Brick

PERFORMANCE SPECIFICATION

WEAR CLASSIFICATION	HEAVY CONTRACT	
VOC EMISSION	ASTM D5116-06	<0.5 mg/m ² /hour (CRI GLP)
FLAMMABILITY	ASTM D-2859//FF 1-70//16CFR 1630	Pass 8/8
CRITICAL RADIANT FLUX	ASTM E648-08	Class 1
STATIC PROPENSITY	ISO 6356	0.2 kV
COLOR FASTNESS	AATCC/16	5/5 on Grey Scale
THERMAL RESISTANCE	ISO 8302	.04m ² K/W
IMPACT SOUND INSULATION	ISO 140-8	ΔLw 23dB
SOUND ABSORPTION LEVEL	EN ISO 11654	αw: 0.15(H)
SOILING PROPENSITY	ASTM D 6540-00	4
DIMENSIONAL STABILITY	EN 986	< 0.20%
CASTOR CHAIR TEST	DIN 54324	R ≥ 2.4
SMOKE DENSITY	EN ISO 9239-1:2002	<450



- Shading or Pile reversal is nature of cut pile carpet and it is not manufacturing defect
- Color may slightly vary from one dye lot to another dye lot
- Total weight of the product can have a normal variation of ± 5%
- We reserve to amend the above specification without prior notice due variables in raw material supplies

