



BUSINESS BAY

Product Type	LOOP
Fiber Composition	100% Nylon (Polyamide 6)
Dye Method	Solution Dyed
Pile Weight	700 g/m ² (21 oz/yd ²)
Number of Tufts	236400/m ²
Machine Gauge	1/10"
Primary Backing	Non-Woven
Secondary Backing	StableShield-100% Vinyl
Tile Size	25 cm x 100 cm (9.8 in x 39.2 in)
Pile Height	3.5 mm
Total Tile Height	6.5 mm
Pile Treatment	INVISTA Anti-Soil Treatment, Anti-Microbial (Optional)
Recommended Installation	Ashlar, Quarter Turn or Herringbone

SPECIFICATIONS



COLOURLINE



Business Bay 745



Business Bay 746



Business Bay 748



Business Bay 756



Business Bay 757



Business Bay 758



Business Bay 772



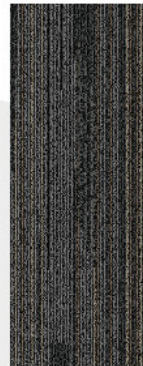
Business Bay 773



Business Bay 775



Business Bay 776



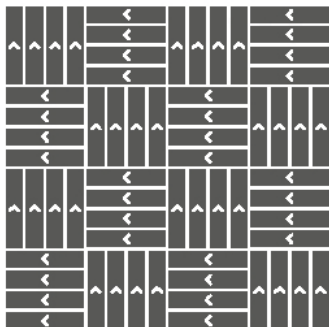
Business Bay 777



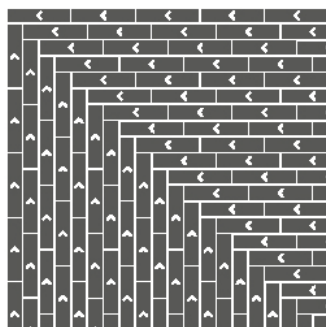


HOW TO INSTALL

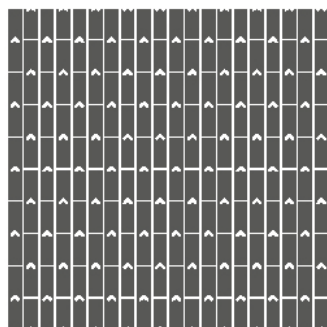
QUARTER TURN



HERRINGBONE



ASHLAR





Standard
CARPETS

www.standardcarpets.com